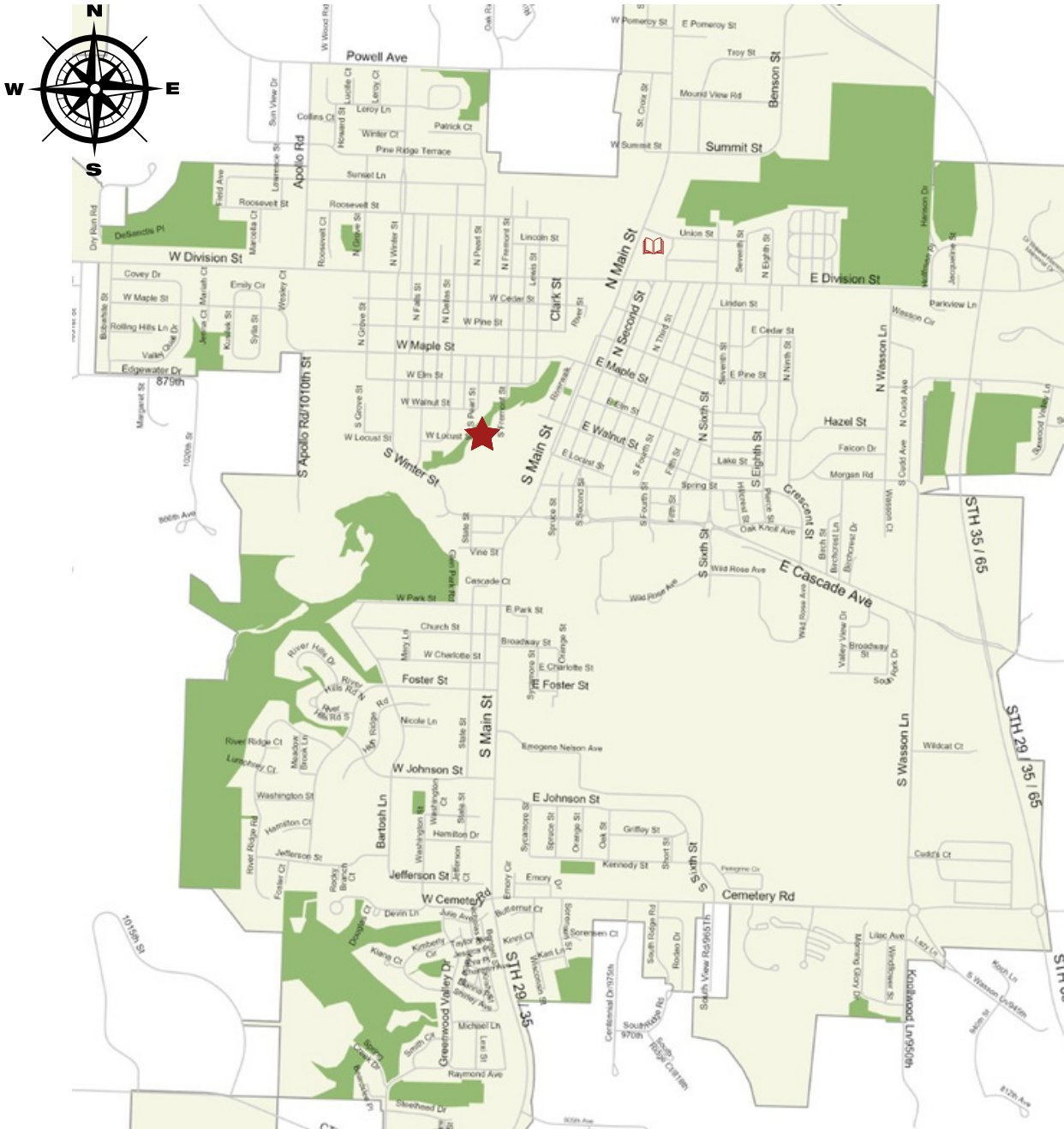


White Kinnickinnic Pathway

374 South Winter Street

River Falls WI 54022

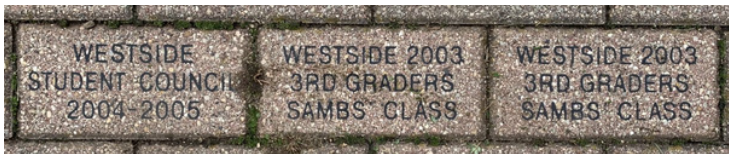


COMPLETE THIS ALL AGES PARK SCAVENGER HUNT AND BRING IT TO THE LIBRARY TO DISCUSS WITH A STAFF PERSON AND REGISTER FOR A PRIZE..

NAME _____



I
SPY



Start your adventure at the north entrance of the path. You will be near a walking bridge, but you'll need to head down the path where you see the White Kinnickinnic Pathway sign. Take some time to read the historic information signs at the beginning of the path. What was the name of the railroad line established by the River Falls and Hudson Railroad in 1878? _____ As you start walking down the path, you will notice a series of cement foundations that once held up the railroad tracks. The first foundation has a new mural that depicts ancient marine biology specific to River Falls. Can you identify any of the shapes? You may need to go to the library and do some research. _____

If you notice any trash along the path, you can pick it up and put it in a trash can. How many pieces of trash can you find? _____ Always be careful picking up trash and make sure to wash your hands after.

As you continue down the path, notice that the river gets wider and wider. At the end of the path, you'll see why, but can you predict the reason? _____

Can you find the deck to feed the ducks? Many people like to feed the ducks bread, but bread isn't healthy for them. What are healthy foods for the ducks to eat? _____

Once you get to the end of the path, you can carefully cross the street to see where Junction mill used to be. What did Junction mill produce (hint: It's an ingredient in what the ducks shouldn't eat.) _____

Can you find the one remaining part of Junction Mill? What is it? It still stands today because students at Westside Elementary school fought for the city to keep the historic landmark. Kids make a difference!
